



Energy
Management

EE0018 MAR2022



R145XC magnetic dirt separator filter

The extra-compact and extra-performing device that removes all impurities in the heating system.

R145XC MAGNETIC DIRT SEPARATOR FILTER

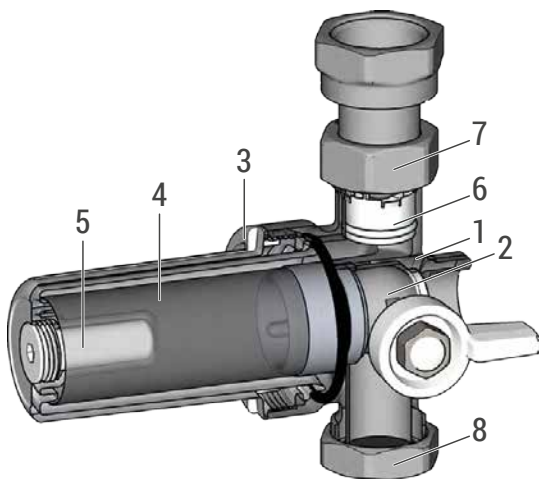
The extra-compact and extra-performing device that removes all impurities in the heating system.

Extraordinary performance and practical installation even in the smallest spaces with the new Giacomini R145XC magnetic dirt separator filter, the extra compact solution designed to offer the best of Giacomini technology in a device so small it can fit in the palm of your hand.

Equipped with a special connection fitting with two inlets, the R145XC dirt separator filter can be installed in any position (vertical, horizontal or slanted) under the boiler and, thanks to the combined action of the high-performance magnet and the large metal filter, it effectively eliminates all impurities present in the system's hydraulic

circuit, while reducing the amount of maintenance required. Energy efficiency is also at an all-time high with the R145XC dirt separator filter. Compared to other compact solutions available in the market, the device designed by Giacomini operates with a significantly higher Kv value, so it guarantees a low pressure drop and lower power consumption by the circulator.

The R145XC's anti-emptying system makes cleaning particularly easy. The dirt separator filter is equipped with a shut-off ball valve and a check valve which allow the device to be completely isolated and cleaned without draining the system.



- 1 Body of the dirt separator
- 2 Ball valve with white handle
- 3 Filter cartridge
- 4 Filter
- 5 Magnet
- 6 Check valve
- 7 Union fitting
- 8 Cap

ANTI-EMPTYING SYSTEM

The dirt separator filter R145XC is equipped with a shut-off ball valve and with a check valve which allow it to be completely isolated from the rest of the system and the cleaning to be carried

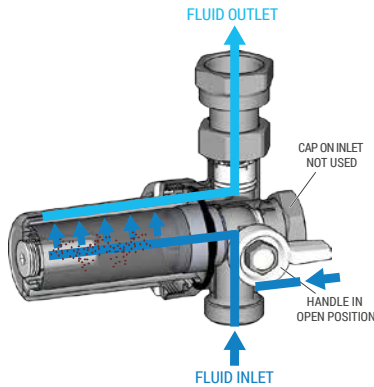
out with no need to empty the boiler. The ball valve can be closed by turning the handle, thus stopping the water flow in the device.

FUNCTIONING OF THE DIRT SEPARATOR FILTER

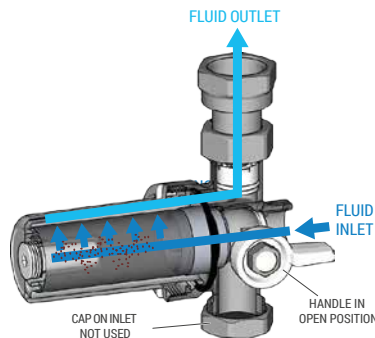
The flow of water enters the dirt separator filter from the chosen inlet (the inlet that is not in use must be closed with the cap provided) and passes through a metal filter that helps separate particles. There is also a high-performance magnet inside

(magnetic capacity of 13000 Gauss) to retain metal components. The impurities captured by the dirt separator filter can subsequently be eliminated by removing the plastic filter cartridge.

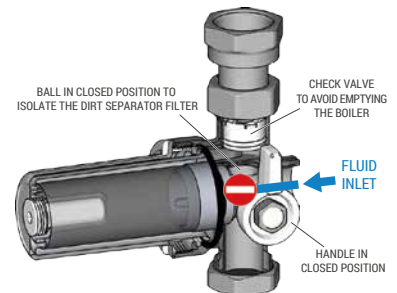
In-line flow operation



Angle-flow operation

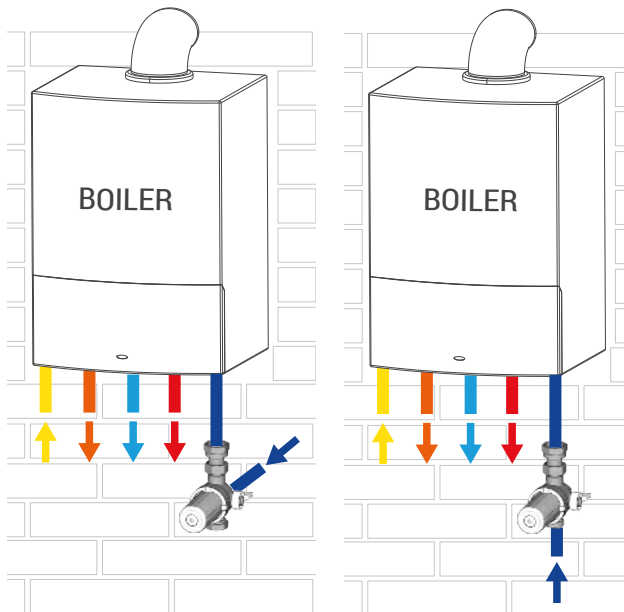


Intercepted flow



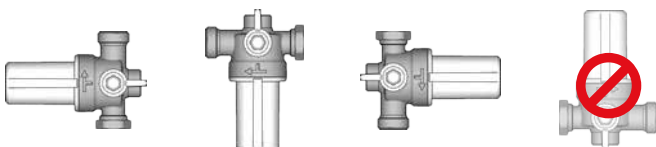
— Fluid entering the dirt separator filter, full of impurities
 — Fluid exiting the dirt separator filter, free of impurities

INSTALLATION



The dirt separator filter should preferably be installed on the return circuit of the heating system to protect the boiler from contamination due to the impurities present in the pipes. Thanks to its compact size, it can be installed just below a wall-mounted boiler. Before commissioning, it is necessary to close the unused inlet of the dirt separator filter using the cap provided. A G 3/4 "F union fitting is also included in the package, which can be used to connect the outlet of the filter directly to the wall-mounted boiler. The dirt separator filter can be mounted in any position, except for installation with the cartridge facing upwards.

— Heating system return
 — Heating system flow
 — Domestic cold water
 — Domestic hot water
 — Gas supply



WARNING. Before installing the filter, it is advisable to check the operating conditions of the system, such as pressure and temperature, to ensure that they are within the operating range. Access to the filter must be unobstructed for maintenance purposes.

The dirt separator filter is equipped with a magnet that generates magnetic fields, which may cause damage to any electronic equipment (including pacemakers) placed nearby.

MAINTENANCE

Cleaning the dirt separator filter

During the operation of the system, impurities are deposited inside the dirt separator filter.

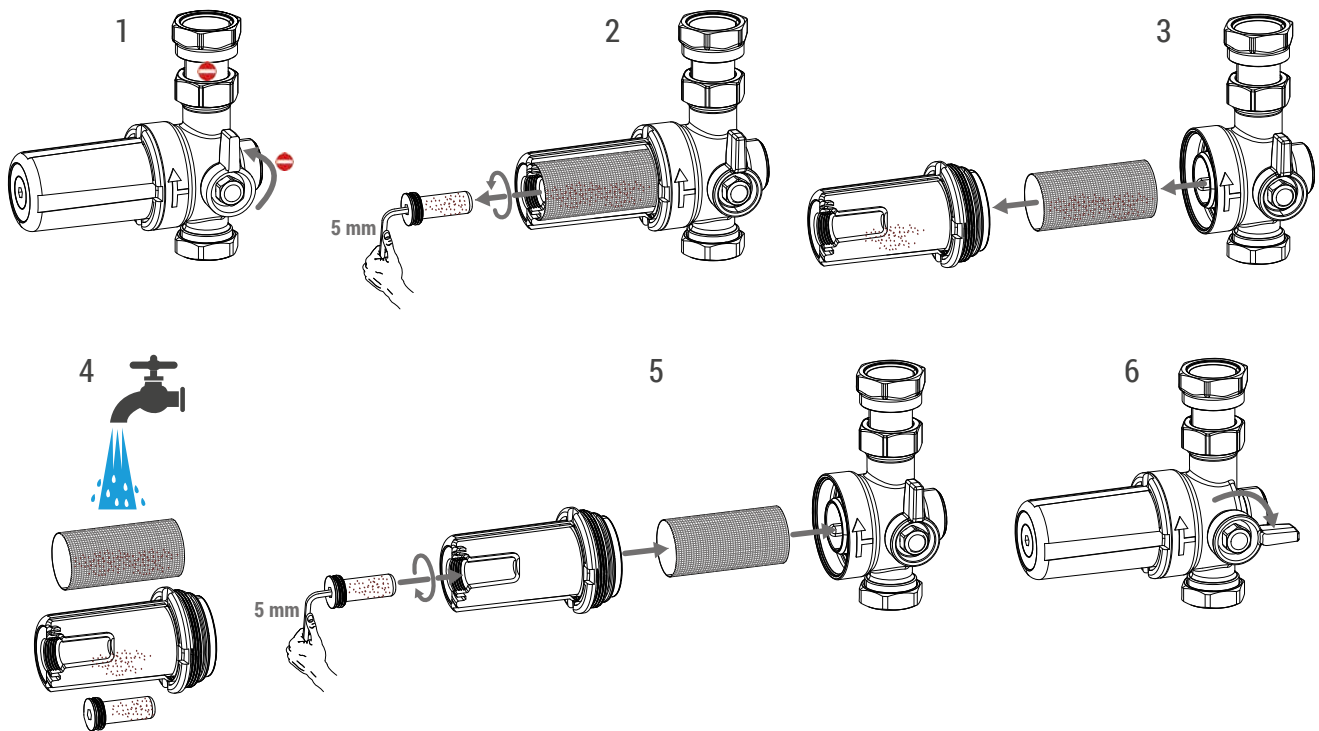
The filter can be cleaned without draining the system, provided that there is no flow in the device (system off).

To clean the filter and remove impurities, proceed as follows:

1. Close the integrated shut-off ball valve to isolate the device from the rest of the system.
2. Remove the magnet from the cartridge by unscrewing it anticlockwise with a 5 mm

Allen key. The ferrous impurities that have accumulated will settle inside the dirt separator filter.

3. Wait for a few minutes, then unscrew the cartridge and remove the filter.
4. Wash the freshly removed components (filter, cartridge and magnet) under running water.
5. Reassemble the cleaned components in the device.
6. Before putting the system back into operation, open the integrated ball valve. The device will resume normal operation.



WARNING. Provide an air vent valve in the system circuit to expel the accumulated air after the maintenance and cleaning operations.